

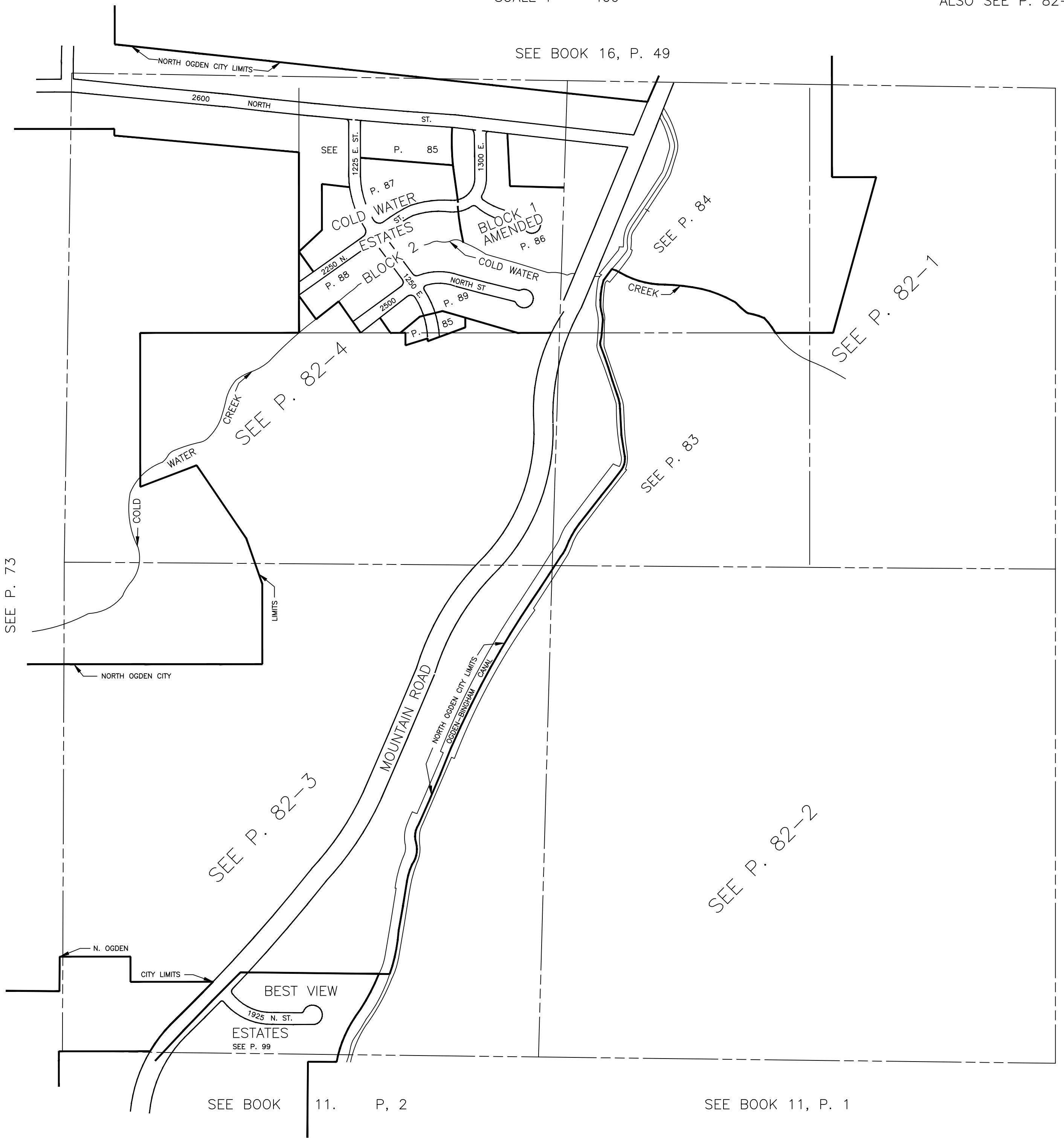
SECTION 34, T.7N., R.1W., S.L.B. & M.

IN NORTH OGDEN CITY & WEBER COUNTY

SCALE 1" = 400'

ALSO SEE P. 82-1 TO 4

SEE BOOK 16, P. 49



SEE P. 73

SEE P. 90

SEE P. 82-3

SEE P. 82-2

SEE BOOK 11, P. 2

SEE BOOK 11, P. 1